

Issued by Notified Body No. 0402 according to Directive 2014/32/EU MID annex II Module B, regarding:

Electronic catchweighing instrument – Loadtronic 3

Issued to

Anderaa Data Instruments AS

PO Box 103 Midtun, NO-5843 Bergen, Norway

Certificate

The weighing instrument specified in this certificate is fulfilling the requirements of directive 2014/32/EU on measuring instruments (MID), implemented in Swedish law by SWEDAC Regulation STAFS 2016:1 and STAFS 2016: 7 The Regulations and Guidelines concerning Automatic weighing Instruments. The conformity assessment is performed according to annex II, Module B of Directive 2014/32/EU. RISE Certification Rule SPCR 302 has been applied.

Applicable essential requirements of directive 2014/32/EU

- Annex I, Essential requirements
- Annex VIII, (MI-006), Automatic weighing instruments

Harmonised standards and normative documents used

OIML R51, edition 2006, Automatic catchweighing instruments

Further applied documents

- WELMEC 2.6, Guide for the testing of automatic catchweighing instruments (Issue 3)
- WELMEC 7.2, Software Guide (Issue 1)

Manufacturing site

Norautron Suzhou Co., Ltd, PR China

Rated operating conditions

Measurand:	Weight in bucket/shovel		
Measurement range:	10 e- 200 e	Electromagnetic environment class:	E3
Accuracy class:	Y(b)	Climatic environment:	-25 to +50 °C

Originally issued: 2008-01-31

Expiry date: 2028-01-31

This certificate replaces earlier issues. This issue is due to adding a new angle sensor.

Martin Tillander

Certificate 0402-MID-489701 | issue 7 | 2021-04-14

RISE Research Institutes of Sweden AB | Certification

Box 857, SE-50115 Borås, Sweden

+46 10 516 50 00 | certifiering@ri.se | www.ri.se

135165

This document is the property of RISE and may not be reproduced other than in full, except with the prior written approval by RISE

Specification of the instrument:

1. Design of the instrument

1.1 Weighing procedure

The weighing is performed when the bucket or other lifting equipment is raised in weighing position and when the bucket is used it is raised in fully retracted position. The weighing is performed dynamically.

1.2 Sensors

Pressure sensor

	Alternative sensors		
Type	8253.84.23XX.XX.17.XX	8254.84.23XX.XX.17.XX	MBS 1250
Capacity	40 MPa (400 bar)	40 MPa (400 bar)	40 MPa (400 bar)
Manufacturer of sensor	Trafag AG, Switzerland		Danfoss A/S, Denmark

Other sensors

Type	Alternative sensors		
- acceleration sensor	SCA121T-D03, SCA121T-D10	DAS-90-A-03	DAS-90-A-05
- angle sensor	SCA121T-D03, SCA121T-D10,	DAS-90-A-03	DAS-90-A-05
Manufacturer of sensor	VTI Technologies, Finland		Level Developments LTd UK

1.3 Measurement value processing

Hardware

The weighing instrument consists of two pressure sensors, measuring the forces applied to the lifting arm system, indicating unit with control electronics. Furthermore, there are three sensors in the system, two clinometers (one indicates the position of the lifting arms and one indicates the acceleration of the machine) and one position sensor (to signal when the lifting tool is retracted to weighing position).

Software

The validation of software was based on the essential requirements given in MID and WELMEC Guide 7.2. A report with number MTmP702831-02, dated 2007-12-13 was issued and is held by RISE. The software identification number, which is 1.xx (the xx is not concerning metrological functions) is shown on the display. The number of lifting tools should be evident from the software program.

1.4 Indication of the measurement results

The control electronic unit may use different displays and interfaces. The control unit consists of a digital data processing unit.

1.5 Optional equipment and functions subject to MID requirements

- Manual zero-point setting every 2 hours
- dynamic setting function (configuration and calibration), only adjustable during set up

1.6 Technical documentation

The operating manual includes technical specifications and for example how to get access to the checksum. Dynamic settings are protected by a hardware switch.

1.7 Integrated equipment and functions not subject to MID

See operating manual.

2. Technical data

2.1 Rated operating conditions

Measurand

Any material within the measuring range, weight expressed in kg.

Measurement range

Maximum capacity,	$\text{Max} \leq e \cdot n$
Minimum capacity,	$\text{Min} \geq 10e$
Verification scale interval, class Y(b)	$e \geq 20 \text{ kg}$
Number of verification scale intervals, class Y(b),	$100 \leq n \leq 200$

Accuracy

Y(b)

Environment classes / influence quantities

Climatic: -25 to +50°C
Electromagnetic: class E3

Durability period under rated operating conditions estimated by the manufacturer

Durability period estimated to be 36 months.

2.2 Other operating conditions

Not applicable.

3. Interfaces and compatibility conditions

The instrument may use the following protective interfaces for data communication:

- Printer (RS232, USB),
- USB interface
- Reverse signal
- RS232 (cable/modem)
- RS485 (J1708)
- CAN (J1939) for external communication

4. Requirements on production, putting into use and utilization

4.1 Requirements on production

No special requirements identified.

4.2 Requirements on putting into use

No special requirements.

4.3 Requirements for consistent utilizations

No special requirements identified.

5. Control of the measuring tasks of the instrument in use

No special measuring tasks are identified.

6. Security measures

6.1 Sealing

Interfaces

No sealing of interfaces is necessary

Indicator

No sealing of indicator is necessary

The switch, located in the indicator is found by opening the lower side of the main unit, is used to prevent unintentional changes, which destroys the verification of the system. It is not sealed. Every event which destroys the verification, is recorded in the event recorder.

Main unit is not sealed. The main card serial number is recorded in event recorder and in verification documents.

Note: The program checksum shall be checked and noted.

Load cells / pressure sensors

The load cells/pressure sensors shall have a clearly visible serial number.

The serial number shall be marked on the descriptive plate

Descriptive plate

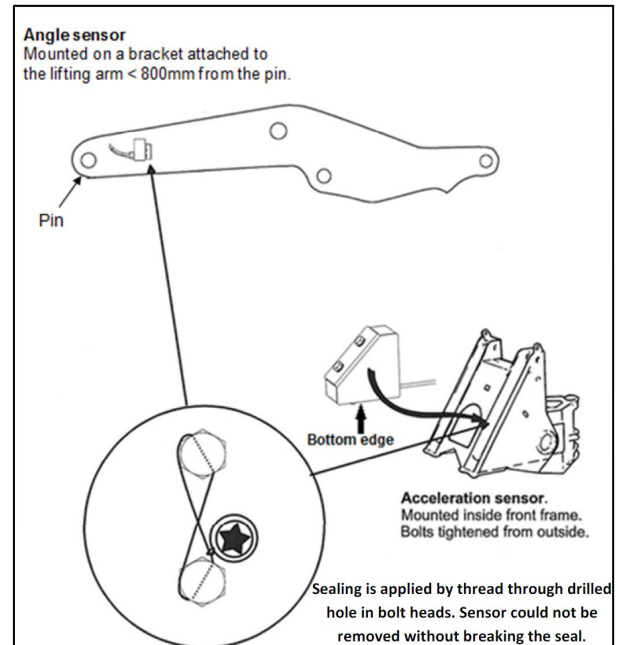
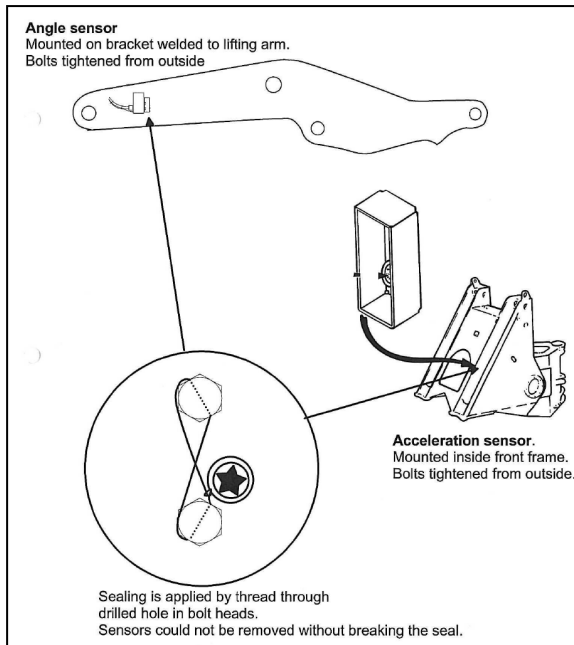
The descriptive plate (plates) shall be secured with sealing stickers unless the plate cannot be removed without being destroyed.

Bucket/shovel

The shovel shall be clearly and permanently marked with its number.

Sensors

The acceleration sensors and the angular sensors shall be sealed by wire.



6.2 Data logger

The instrument has a Data storage device.

7. Labelling and inscriptions

7.1 Information to be borne by the instrument

The descriptive plate mounted on the instrument shall contain the following information:

name or identification mark of the manufacturer
 serial number and type designation
 number of EC type examination certificate
 accuracy class
 verification scale interval, e
 checksum
 maximum capacity, Max
 minimum capacity, Min
 temperature range
 electrical supply

If different lifting tools with different Max capacity are used it should be evident from the descriptive plate.

7.2 Conformity marking in accordance to MID article 21

The instrument shall be marked in accordance with MID article 21 which e.g. describes the CE-marking together with M, year of marking and the notified body number.

7.3 Further inscriptions, if necessary

No further inscriptions considered necessary.

8. Testing and examination

All the plans, schematic diagrams and documentations are recorded under reference files MTm P702831, 3P00832, 8P00270-01-1, 135165-01-1.

